

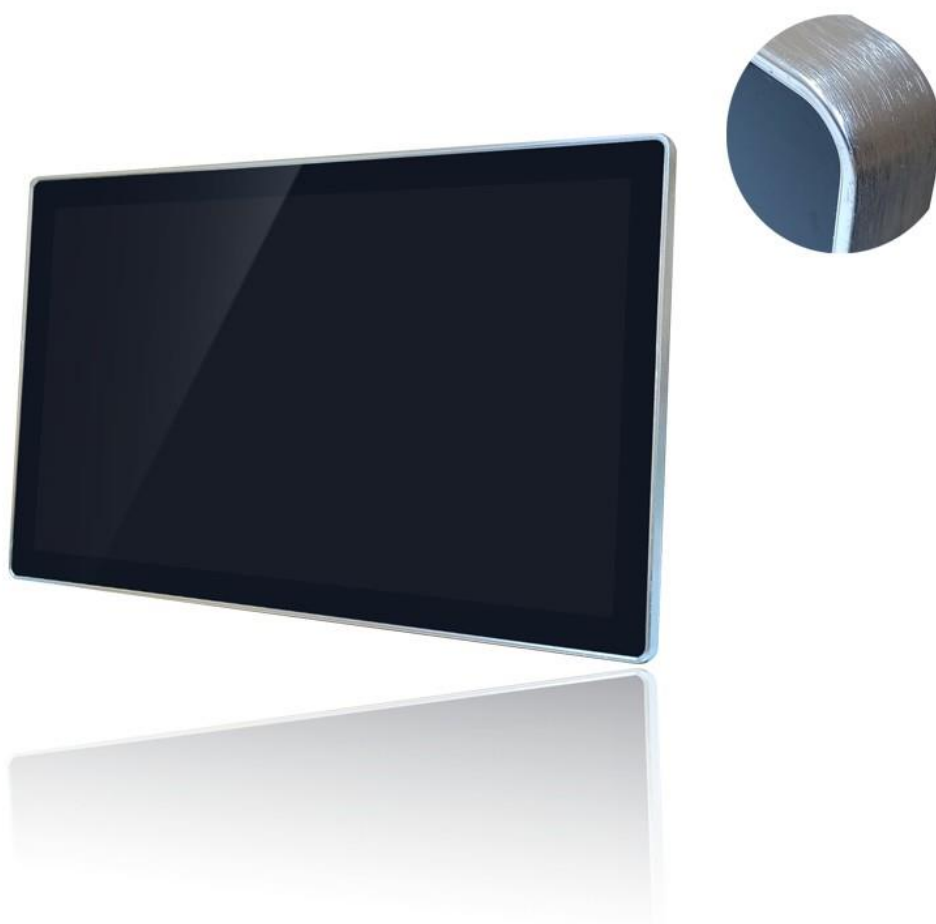


捷特威事業股份有限公司

Product specs

JE-YL32-VGHD

Revision. 2022.09



JETWAY

1. Operation considerations

1. Because it is easy to damage before, please be careful not to scratch.
2. Be sure to power off when plugged in or disconnected from the input connector.
3. Immediately removal of water droplets for long contact with water can cause spots or spots.
4. When panel surface stain, wipe with skim cotton or soft cloth.
5. Since panels are made of glass, they may break or break if detached or impacted on a hard surface.
6. To avoid electrostatic release (electrostatic) damage, the inspector wears an electrostatic ring to test the TFT-LCD module.
7. Do not open or modify the module assembly.
8. Do not press the reflector on the back of the module in any direction.
9. If the module must be put back into the packaging container slot after removal from the container, do not press the center of the edge of the LED lamp bar. Instead, gently press the distal end of the edge of the LED light bar. Otherwise, the TFT module may be damaged.
10. When inserting or removing the signal interface connector, always do not rotate or tilt the interface connector of the TFT module.
11. The TFT module does not allow to be twisted and bent or even force added to the module in a very short time. Please design your display product to avoid external user application directly to the module.
12. There is no flammable grade material in the TFT-LCD module. The power supply that should be provided by the TFT-LCD module meets the power limit (or UL1950 IEC60950 etc.) or applicable.
13. Severe temperature conditions can lead to different luminosity, response times, and light ignition voltage.
14. The TFT LCD screen operating continuously in a low temperature environment can accelerate the depletion of lights and reduce the brightness significantly.
15. The data on this specification table is applicable when the LCD module is placed in the landscape location.
16. Continuous display of fixed patterns induced image adhesion. It is recommended to use the screensaver or change the display content regularly when displaying fixed mode on the screen.

2. Display properties

L C D	
Screen size	32 "
Screen diagonal	16 : 9(H:V)
Pixels H x V	1920*1080/60HZ
Visual angle	Horizontal (L/R) CR≥10 89 ° /89 ° Vertical (up/down) CR≥10 89 ° /89 °
Displays the size	698mm (W) × 392mm (H)
Luminance	250nits
Contrast ratio	3000:1
Response time	8ms
Display plays color	16. 7M
Backlight life	30K hours
Interface function	
Support interface	VGA, HDMI
S o u r c e	
Input voltage	External adapter : 100-240V AC , 50-60 Hz Input voltage range : +12V DC ± 5%
Consumption	66W
Material and packaging	
Face frame material	Sheet metal
Rear shell material	Sheet metal (Black yarn spray paint)
Frame size	760mm (W) x 452mm (H) x 66mm (D)
Back keyhole size	Schematic
Carton size	830mm (W) × 530mm (H) × 130mm (D)
Weight	14.5 Kg
Accessories	VGA + Adapter
Work environment warranty	
Working temperature	0℃ - 40℃
Operating humidity	20% - 80%
Storage temperature	-20℃ - 60℃
Store humidity	10% - 90%
W a r r a n t y	
One year (Except for man-made damage)	

3. Outline drawing

