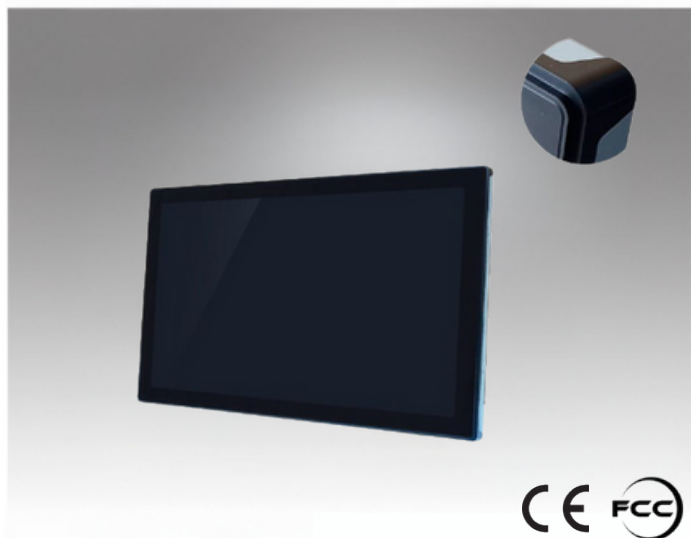


JE-215PM-H



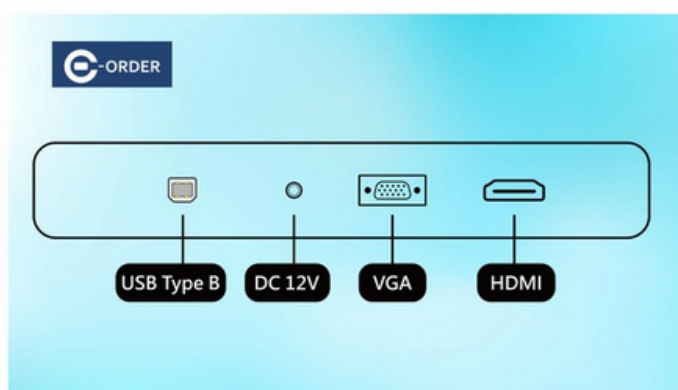
We are committed to developing high-quality and highly innovative products while providing the best services to global customers.

Features

- Modular Design
- Touch glass and screen can be independently replaced.
- Uses A-grade LCD panel manufacturer's backlight module panel
- CE/FCC certified

Introduction

This 21.5-inch LCD monitor provides a clear 1920x1080 resolution, 250 nits brightness, and a 3000:1 contrast ratio for sharp and detailed display. With an $\leq 10\text{ms}$ response time, it supports both VGA and HDMI interfaces for versatile device connectivity. The display offers 16.7 million colors and boasts a 30,000-hour backlight lifespan, ensuring stable performance over extended use. The monitor's plastic frame and metal back shell make it durable and robust, suitable for various environments such as homes and offices. Additionally, it has low power consumption (22W), making it energy-efficient.



Specifications

LCD

- Screen size 21.5"
- Screen diagonal 16 : 9(H:V)
- Pixels H x V 1920*1080/60HZ
- Visual angle Horizontal (L/R) $\text{CR} \geq 1089^\circ / 89^\circ$
Vertical (up/down) $\text{CR} \geq 1089^\circ / 89^\circ$
- Displays the size 476mm (W) \times 268mm (H)
- Luminance 250nits
- Contrast ratio 3000:1
- Response time $\leq 10\text{ms}$
- Display plays color 16.7M
- Backlight life 30K hours

Interface function

- Support interface VGA, HDMI

Source

- Input voltage External adapter : 100-240V AC \cdot 50-60 Hz
Input voltage range : $+12\text{V DC} \pm 5\%$
- Consumption 22W

Material and packaging

- Face frame material Plastic
- Rear shell material Sheet metal
- Frame size 535mm (W) \times 323mm (H) \times 45mm (D)
- Back keyhole size Schematic
- Carton size 625mm (W) \times 425mm (H) \times 130mm (D)
- Weight 5.8 Kg
- Accessories VGA + Adapter

Work environment warranty

- Working temperature $0^\circ\text{C} - 40^\circ\text{C}$
- Operating humidity 20% - 80%
- Storage temperature $-20^\circ\text{C} - 60^\circ\text{C}$
- Store humidity 10% - 90%

Warranty

One year (Except for man-made damage)

Dimensions

