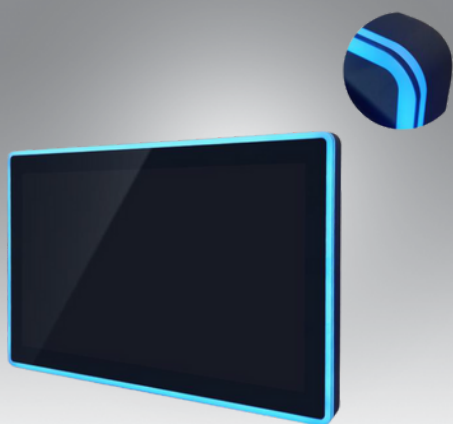


JE-27PM-L



Introduction

This 27-inch LCD monitor offers a 1920x1080 resolution, with a brightness of 250 nits and a contrast ratio of 3000:1. It features VGA, DVI, and HDMI interfaces, along with multi-color LED light strips. Suitable for both home and office use, it has a sturdy design and a backlight lifespan of up to 50,000 hours.

Specifications

LCD

- Screen size 27"
- Screen diagonal 16 : 9(H:V)
- Pixels H x V 1920*1080@60HZ
- Visual angle Horizontal (L/R) $CR \geq 1089^\circ / 89^\circ$
Vertical (up/down) $CR \geq 1089^\circ / 89^\circ$
- Displays the size 598mm (W) \times 335mm (H)
- Luminance 250nits
- Contrast ratio 3000:1
- Response time 14ms
- Display plays color 16.7M
- Backlight life 50K hours

Interface function

- Support interface VGA,DVI,HDMI

LED Lights

- Color Multicolor
- Location 4 LED lights bar (Front, Back & Edge)

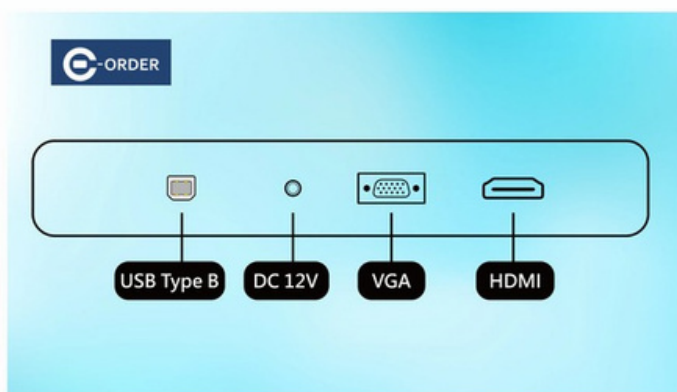
Source

- Input voltage External adapter : 100-240V AC , 50-60 Hz
Input voltage range : +12V DC \pm 5%
- Consumption 40W (RGB LED Lights not included)

We are committed to developing high-quality and highly innovative products while providing the best services to global customers.

Features

- Modular Design
- Touch glass and screen can be independently replaced.
- Uses A-grade LCD panel manufacturer's backlight module panel
- CE/FCC certified



Material and packaging

- Face frame material Sheet metal
- Rear shell material Sheet metal
- Frame size 667mm (W) x 406mm (H) x 69mm (D)
- Back keyhole size
- Carton size 785mm (W) x 530mm (H) x 285mm (D)
- Weight 10.7 Kg
- Accessories VGA + Adapter

Work environment warranty

- Working temperature $0^\circ\text{C} - 40^\circ\text{C}$
- Operating humidity 20% - 80%
- Storage temperature $-20^\circ\text{C} - 60^\circ\text{C}$
- Store humidity 10% - 90%

Warranty

One year (Except for man-made damage)

Dimensions

