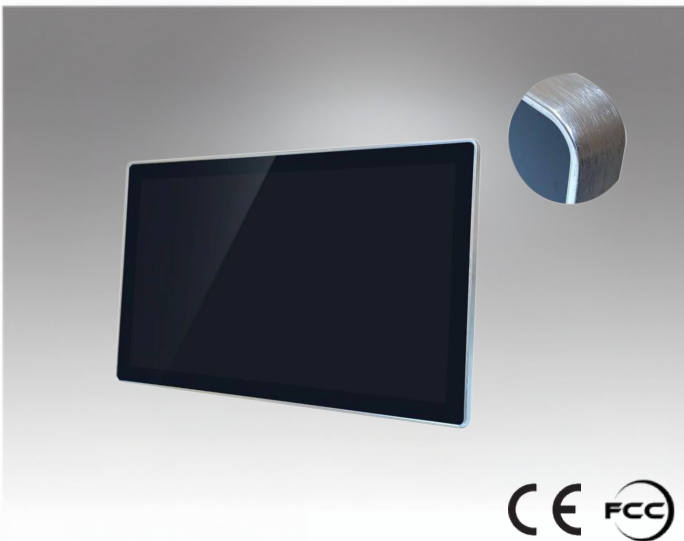


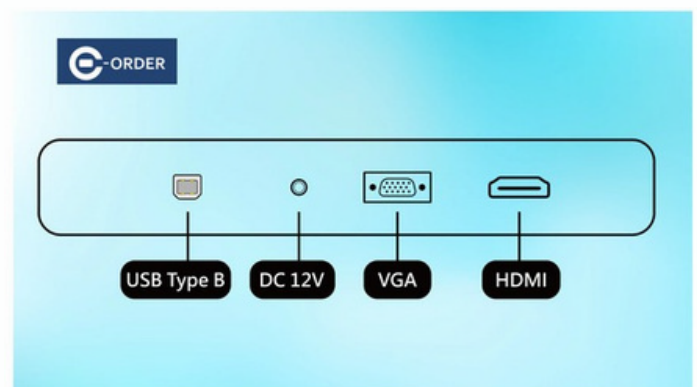
JE-27TPM-Y



We are committed to developing high-quality and highly innovative products while providing the best services to global customers.

Features

- Modular Design
- Touch glass and screen can be independently replaced.
- Uses A-grade LCD panel manufacturer's backlight module panel
- CE/FCC certified



Introduction

This 27-inch LCD monitor provides a clear 1920x1080 resolution, 250 nits brightness, and a 3000:1 contrast ratio for sharp and detailed display. With an 18ms response time, it supports both VGA and HDMI interfaces for versatile device connectivity. The display offers 16.7 million colors and boasts a 30,000-hour backlight lifespan, ensuring stable performance over extended use. The monitor's plastic frame and metal back shell make it durable and robust, suitable for various environments such as homes and offices. Additionally, it has low power consumption (22W), making it energy-efficient.

Specifications

LCD

- Screen size 27"
- Screen diagonal 16 : 9(H:V)
- Pixels H x V 1920*1080/60HZ
- Visual angle Horizontal (L/R) CR \geq 10 89°/89°
Vertical (up/down) CR \geq 10 89°/89°
- Displays the size 598mm (W) × 335mm (H)
- Luminance 250nits
- Contrast ratio 3000:1
- Response time 12ms
- Display plays color 16.7M
- Backlight life 30K hours

Touch Screen Parameters

- Touch Technology Projected Capacitive (P - Cap)
- Light Transmission \geq 83%
- Response Time 8ms
- Touch Screen Interface USB
- Touch Point 10

Interface function

- Support interface VGA,HDMI
- System support Windows7 / Windows8.1 / Windows10

Source

- Input voltage External adapter : 100-240V AC , 50-60 Hz
Input voltage range : +12V DC \pm 5%
- Consumption 40W

Material and packaging

- Face frame material Sheet metal
- Rear shell material Sheet metal (Black yarn spray paint)
- Frame size 659mm (W) x 397mm (H) x 55mm (D)
- Back keyhole size 100mm x 100mm
- Carton size 735mm (W) × 495mm (H) × 135mm (D)
- Weight 9.9 Kg
- Accessories VGA + Adapter + USB

Work environment warranty

- Working temperature 0°C - 40°C
- Operating humidity 20% - 80%
- Storage temperature -20°C - 60°C
- Store humidity 10% - 90%

Warranty

One year (Except for man-made damage)

Dimensions

