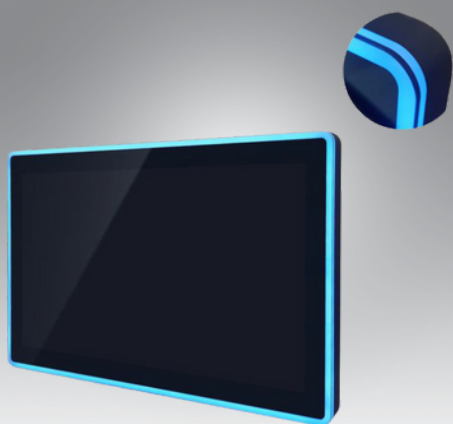


# JE-32PM-L



## Introduction

This 32-inch LCD monitor offers a 1920x1080 resolution, with a brightness of 250 nits and a contrast ratio of 3000:1. It features VGA, DVI, and HDMI interfaces, along with multi-color LED light strips. Suitable for both home and office use, it has a sturdy design and a backlight lifespan of up to 50,000 hours.

## Specifications

### LCD

- Screen size 32"
- Screen diagonal 16 : 9(H:V)
- Pixels H x V 1920\*1080@60HZ
- Visual angle Horizontal (L/R) CR $\geq$ 10 89 ° /89 °  
Vertical (up/down) CR $\geq$ 10 89 ° /89 °
- Displays the size 698mm (W) × 392mm (H)
- Luminance 250nits
- Contrast ratio 3000:1
- Response time 8ms
- Display plays color 16.7M
- Backlight life 50K hours

### Interface function

- Support interface VGA,DVI,HDMI

### LED Lights

- Color Multicolor
- Location 4 LED lights bar (Front, Back & Edge)

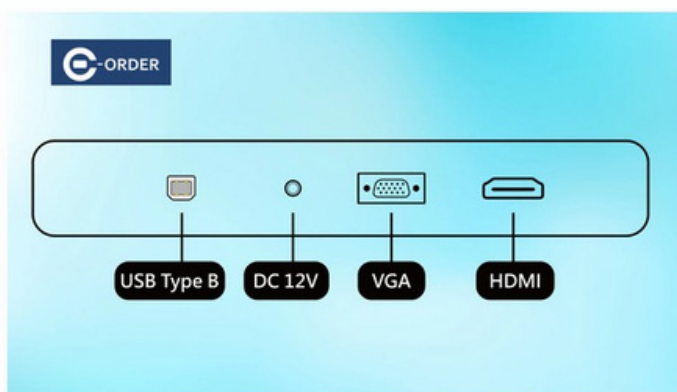
### Source

- Input voltage External adapter : 100-240V AC , 50-60 Hz  
Input voltage range : +12V DC  $\pm$  5%
- Consumption 40W (RGB LED Lights not included)

We are committed to developing high-quality and highly innovative products while providing the best services to global customers.

## Features

- Modular Design
- Touch glass and screen can be independently replaced.
- Uses A-grade LCD panel manufacturer's backlight module panel
- CE/FCC certified



## Material and packaging

- Face frame material Sheet metal
- Rear shell material Sheet metal
- Frame size 766mm (W) x 467mm (H) x 60mm (D)
- Back keyhole size
- Carton size 905mm (W) x 630mm (H) x 215mm (D)
- Weight 15.8 Kg
- Accessories VGA + Adapter

## Work environment warranty

- Working temperature 0°C - 40°C
- Operating humidity 20% - 80%
- Storage temperature -20°C - 60°C
- Store humidity 10% - 90%

## Warranty

One year ( Except for man-made damage )

## Dimensions

