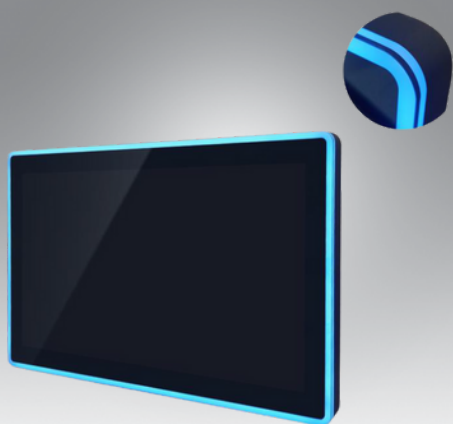


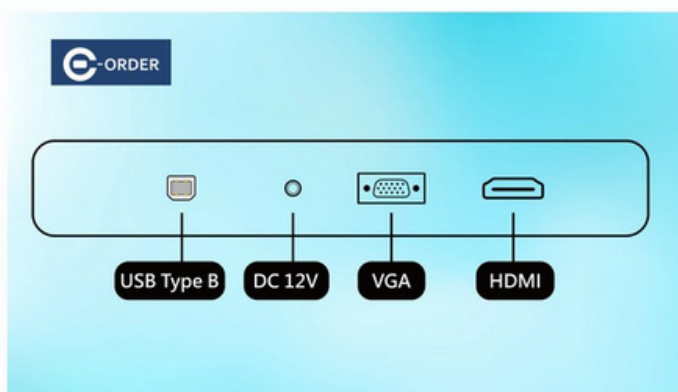
JE-32TPM-L



We are committed to developing high-quality and highly innovative products while providing the best services to global customers.

Features

- Modular Design
- Touch glass and screen can be independently replaced.
- Uses A-grade LCD panel manufacturer's backlight module panel
- CE/FCC certified



Introduction

This 32-inch LCD monitor offers a 1920x1080 resolution, with a brightness of 250 nits and a contrast ratio of 3000:1. It features VGA, DVI, and HDMI interfaces, along with multi-color LED light strips. Suitable for both home and office use, it has a sturdy design and a backlight lifespan of up to 50,000 hours.

Specifications

LCD

- Screen size 32"
- Screen diagonal 16 : 9(H:V)
- Pixels H x V 1920*1080@60HZ
- Visual angle Horizontal (L/R) CR≥10 89° /89°
Vertical (up/down) CR≥10 89° /89°
- Displays the size 698mm (W) × 392mm (H)
- Luminance 250nits
- Contrast ratio 3000:1
- Response time 8ms
- Display plays color 16.7M
- Backlight life 50K hours

Touch Screen Parameters

- Touch Technology Projected Capacitive (P - Cap)
- Light Transmission ≥ 83%
- Response Time 8ms
- Touch Screen Interface USB
- Touch Point 10

Interface function

- Support interface VGA,DVI,HDMI
- System support Windows7 / Windows8.1 / Windows10

LED Lights

- Color Multicolor
- Location 4 LED lights bar (Front, Back & Edge)

Source

- Input voltage External adapter : 100-240V AC , 50-60 Hz
Input voltage range : +12V DC ± 5%
- Consumption 60W (RGB LED Lights not included)

Material and packaging

- Face frame material Sheet metal
- Rear shell material Sheet metal
- Frame size 766mm (W) x 467mm (H) x 60mm (D)
- Back keyhole size Schematic
- Carton size 905mm (W) x 630mm (H) x 215mm (D)
- Weight 7.8 Kg
- Accessories VGA + Adapter+ USB

Work environment warranty

- Working temperature 0°C - 40°C
- Operating humidity 20% - 80%
- Storage temperature -20°C - 60°C
- Store humidity 10% - 90%

Warranty

One year (Except for man-made damage)

