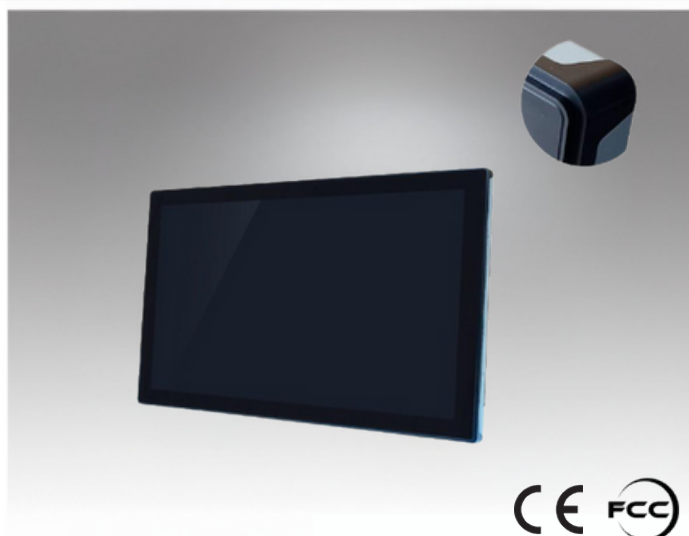


JE-43TPM-H



We are committed to developing high-quality and highly innovative products while providing the best services to global customers.

Features

- Modular Design
- Touch glass and screen can be independently replaced.
- Uses A-grade LCD panel manufacturer's backlight module panel
- CE/FCC certified

Introduction

This 43-inch LCD monitor provides a clear 1920x1080 resolution, 250 nits brightness, and a 3000:1 contrast ratio for sharp and detailed display. With an 8ms response time, it supports both VGA and HDMI interfaces for versatile device connectivity. The display offers 16.7 million colors and boasts a 30,000-hour backlight lifespan, ensuring stable performance over extended use. The monitor's plastic frame and metal back shell make it durable and robust, suitable for various environments such as homes and offices. Additionally, it has low power consumption (22W), making it energy-efficient.

Specifications

LCD

- Screen size 43"
- Screen diagonal 16 : 9(H:V)
- Pixels H x V 1920*1080/60HZ
- Visual angle Horizontal (L/R) CR \geq 10 89 ° /89 °
Vertical (up/down) CR \geq 10 89 ° /89 °
- Displays the size 940mm (W) × 529mm (H)
- Luminance 250nits
- Contrast ratio 3000:1
- Response time 8ms
- Display plays color 16.7M
- Backlight life 30K hours

Touch Screen Parameters

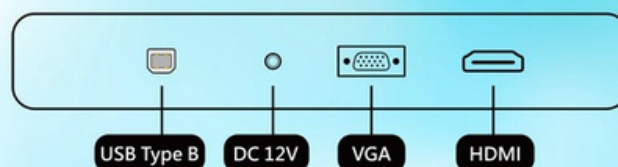
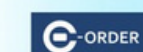
- Touch Technology Projected Capacitive (P - Cap)
- Light Transmission \geq 83%
- Response Time 8ms
- Touch Screen Interface USB
- Touch Point 10

Interface function

- Support interface VGA,HDMI
- System support Windows7 / Windows8.1 / Windows10

Source

- Input voltage External adapter : 100-240V AC , 50-60 Hz
Input voltage range : +12V DC \pm 5%
- Consumption 150W



Material and packaging

- Face frame material Plastic
- Rear shell material Sheet metal
- Frame size 1024mm (W) x 612mm (H) x 59mm (D)
- Back keyhole size Schematic
- Carton size 1126mm (W) × 630mm (H) × 220mm (D)
- Weight 25.1 Kg
- Accessories VGA + Adapter + USB

Work environment warranty

- Working temperature 0°C - 40°C
- Operating humidity 20% - 80%
- Storage temperature -20°C - 60°C
- Store humidity 10% - 90%

Warranty

One year (Except for man-made damage)

Dimensions

