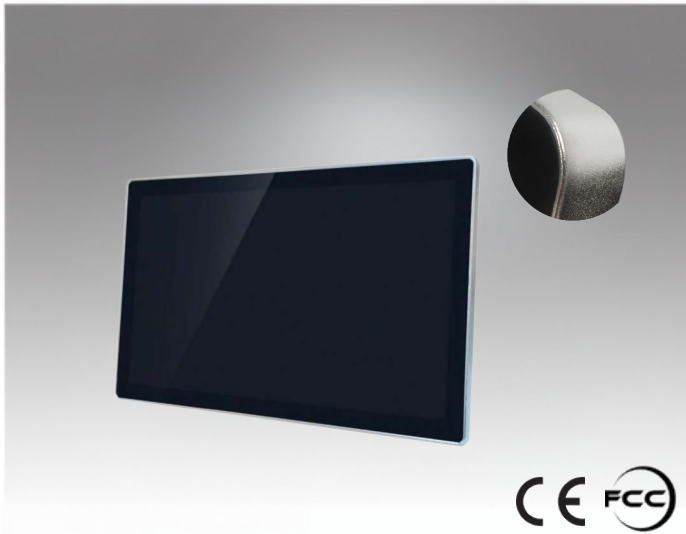


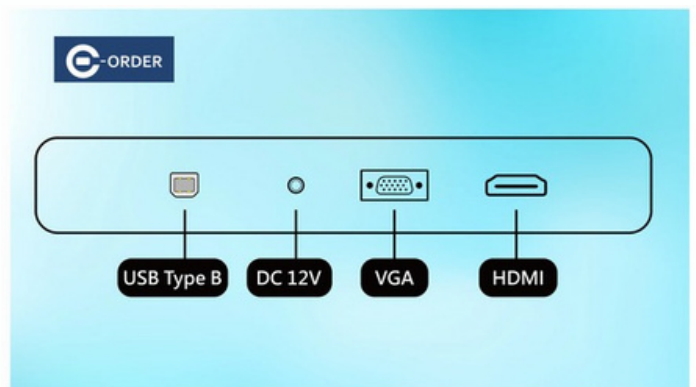
JE-27PM-Y



We are committed to developing high-quality and highly innovative products while providing the best services to global customers.

Features

- Modular Design
- Touch glass and screen can be independently replaced.
- Uses A-grade LCD panel manufacturer's backlight module panel
- CE/FCC certified



Introduction

This 27-inch LCD monitor provides a clear 1920x1080 resolution, 250 nits brightness, and a 3000:1 contrast ratio for sharp and detailed display. With an 12ms response time, it supports both VGA and HDMI interfaces for versatile device connectivity. The display offers 16.7 million colors and boasts a 30,000-hour backlight lifespan, ensuring stable performance over extended use. The monitor's plastic frame and metal back shell make it durable and robust, suitable for various environments such as homes and offices. Additionally, it has low power consumption (22W), making it energy-efficient.

Specifications

LCD

- **Screen size** 27"
- **Screen diagonal** 16 : 9(H:V)
- **Pixels H x V** 1920*1080/60HZ
- **Visual angle** Horizontal (L/R) CR≥10 89° /89°
Vertical (up/down) CR≥10 89° /89°
- **Displays the size** 598mm (W) × 335mm (H)
- **Luminance** 250nits
- **Contrast ratio** 3000:1
- **Response time** 12ms
- **Display plays color** 16.7M
- **Backlight life** 30K hours

Interface function

- **Support interface** VGA,HDMI

Source

- **Input voltage** External adapter : 100-240V AC , 50-60 Hz
Input voltage range : +12V DC ± 5%
- **Consumption** 40W

Material and packaging

- **Face frame material** Sheet metal
- **Rear shell material** Sheet metal (Black yarn spray paint)
- **Frame size** 659mm (W) x 397mm (H) x 55mm (D)
- **Back keyhole size** 100mm x 100mm
- **Carton size** 735mm (W) × 495mm (H) × 135mm (D)
- **Weight** 9.4 Kg
- **Accessories** VGA + Adapter

Work environment warranty

- **Working temperature** 0°C - 40°C
- **Operating humidity** 20% - 80%
- **Storage temperature** -20°C - 60°C
- **Store humidity** 10% - 90%

Warranty

One year (Except for man-made damage)

Dimensions

